



RRT-35SATA-R 3.5" SATA Enclosure with Removable Module

THE 3.5" SATA ENCLOSURE WITH REMOVABLE SSD MODULE is for applications that require the frequent removal of SSD, fast transfer rates and large capacities.

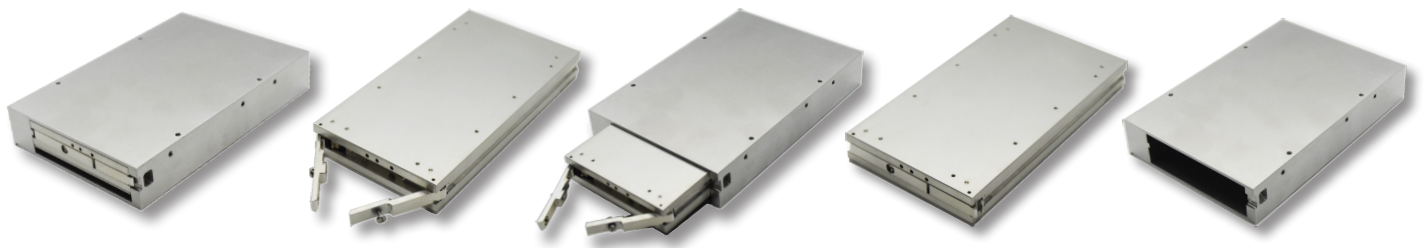
It consists of two components; the 3.5" SATA enclosure with SATA 3 interface that has standard 3.5" mounting holes and removable SATA SSD module. The connectors between the drive module and the enclosure are rated for 100,000 mating cycles to support frequent insertions and removals.

The SATA SSD module can use any COTS 2.5" SATA Solid State Drive (SSD) providing capacities up to 15TB and transfer rates of up to 600 MB/S. Options for FIPS140-2, FIPS197, TCG Opal, and military erase.

- Capacities up to 20 TB
- 600 MB/S transfer rates
- Removable SSD module
- SATA 3 (SATA600)
- Compatible with Sata 1, 2
- 100,000 mating cycles
- 3.5" form factor
- Boot and/or disk storage
- COTS 2.5" SATA SSDs
- Military erase options
- FIPS140-2, FIPS197, TCG Opal options
- Option for thumbscrews to remove drive module without tools
- No additional software required



EASILY REMOVE SSD DRIVE MODULE



Ordering Information

3.5" SATA Enclosure

RRT-35SATA-R- **UR** - **X**

Options May be left blank

Conformal Coating

UR Polyurethane
AR Acrylic

Extended Temperature Range

X -40°C to 85°C

ORDER EXAMPLES

RRT-35-SATA-R
RRT-35-SATA-R-UR-X

Removable SATA SSD Drive Module

RRT-DM-SATA- **MLC** - **20TB** - **UR** - **X** - **FE** - **TS**

Requirements

NAND Flash Type

HDD Hard Disk Drive
TLC 3D NAND
MLC Multi Level Cell
SLC Single Level Cell

Capacity

1TB - 5TB For HDD
120GB - 8TB For TLC
60GB - 20TB For MLC
7GB - 240GB For SLC

Options May be left blank

No Tools

TS Thumbscrews

Security

FE Fast Erase
SE1 NSA/CSS Manual 9-12 Erase
SE2 RCC-TG IRIG 106-107 Chapter 10 Erase
OPAL TCG Opal Compliant SSD
FIPS140-2 FIPS 140-2 Compliant SSD
FIPS197 FIPS 197 Compliant SSD

Extended Temperature Range

X -40°C to 85°C

Conformal Coating

UR Polyurethane
AR Acrylic

ORDER EXAMPLES

RRT-DM-SATA-SLC-240GB-TS
RRT-DM-SATA-MLC-20TB-UR-X-SE1
RRT-DM-SATA-HDD-1TB-FIPS140-2



Product Specifications

3.5" SATA ENCLOSURE WITH REMOVABLE MODULE

PERFORMANCE

NAND FLASH TYPE	HDD	SSD: TLC	SSD: MLC	SSD: MLC-X	SSD: SLC
CAPACITIES ¹	Up to 5TB	Up to 8TB	Up to 20TB		Up to 240GB
INTERFACE ²	SATA3				
THROUGHPUT - SUSTAINED	130 MB/S	400 MB/S			

RELIABILITY

MTBF - DRIVE	500,000 hours	1 million hours	2 million hours		3 million hours
MTBF - DRIVE MODULE	3 million hours				
MTBF - 3.5" ENCLOSURE ³	3 million hours				
DATA RETENTION	Not applicable	1 year		10 years	
ENDURANCE (100GB) TOTAL BYTES WRITTEN	Not applicable	70 TBW		350 TBW	
CARRIER/DRIVE MODULE MATING CYCLES	100,000 mating cycles				

POWER

VOLTAGE-STORAGE	+5V +/- 5%				
WATTS (IDLE)	1 W	1.2 W	3.5 W	1 W	
WATTS (ACTIVE)	2.5 W	4 W	10 W	2.5 W	

ENVIRONMENTAL

OPERATING TEMP., VITA 47 CLASS	5 °C to 55 °C	0 °C to 60 °C	0 °C to 70 °C	See MLC	0 °C to 70 °C
EXTENDED OPERATING TEMP., VITA 47 CLASS ⁴	Not available		See MLC-X	-40 °C to 85 °C	
STORAGE TEMP.	-40 °C to 70 °C	-40 °C to 85 °C			
ALTITUDE	10,000 ft. (3,000 meters)			80,000 ft. (24,000 meters)	
RELATIVE HUMIDITY	5% to 95% non-condensing				
SHOCK, VITA 47 CLASS ⁵	20g, 11 millisecond terminal sawtooth pulse			40g, 11 millisecond terminal sawtooth pulse	
VIBRATION, VITA 47 CLASS ⁶	0.04 g2/Hz, 5 Hz to 100 Hz			0.1 g2/Hz, 100 Hz to 1000 Hz	

PHYSICAL

FORM FACTOR	3.5"
WEIGHT	21 oz. (578g)
PITCH	4.0" x 5.75" x 1.0" (101.6mm x 146.1mm x 25.4mm)

NOTES

- (1) Larger capacities available as new COTS 2.5" drives released
- (2) Interface connected via compatible slot profile SLT3-STO-1U-16.5.1
- (3) Telcordia SR-322, Issue 3, operating temp (40C), electrical stress (50%), environmental factor (1.0)
- (4) Thermal qualification per MIL-STD-810, Method 501, Procedure II, and MIL-STD-810, Method 502, Procedure II
- (5) Shock qualification per MIL-STD-810F, Method 516, Procedure I
- (6) Vibration qualification per MIL-STD-810F, Method 514, Procedure 1



Red Rock Technologies, Inc. reserves the right to modify, change or discontinue specific products within its product line at its own discretion. Red Rock Technologies, Inc. does not assume any liability resulting from the application or use of its products. The information contained herein has been checked and is believed to be entirely accurate; however, no responsibility is assumed for inaccuracies. "Red Rock Technologies" and the mountain logo are registered trademarks of Red Rock Technologies, Inc.

© Copyright 2023 Red Rock Technologies, Inc.
All rights reserved. (Rev. 20230113a)